



# INSPIRING VIEWS. HOW AI WILL IMPACT ON THE SOCIETY AND ON THE FUTURE JOBS

ARE YOU **IRREPLACEABLE** IN THE ERA OF AI?



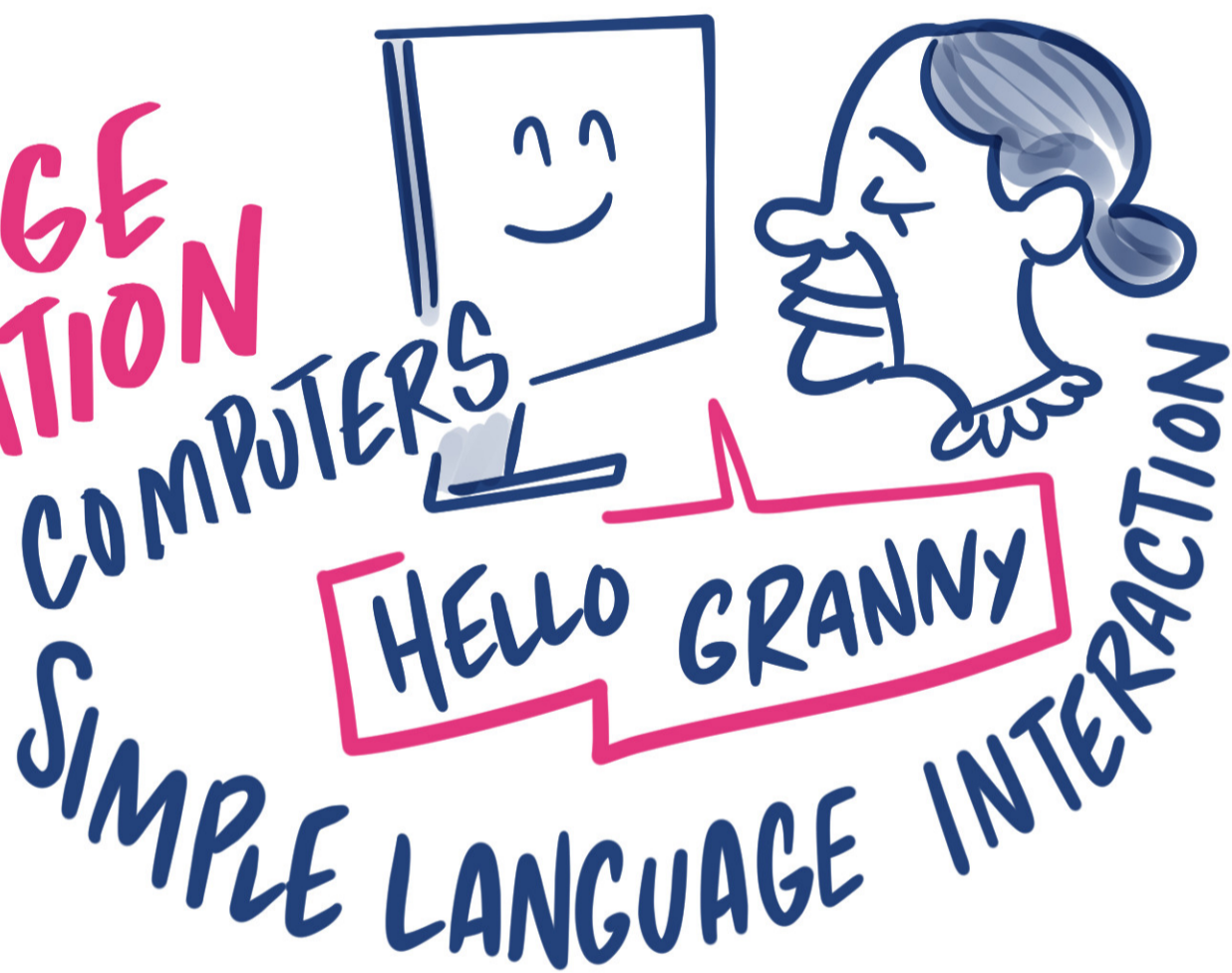
AI CAN DO the **SAME** that ME?



Got the **TALENT**



IT WILL **CHANGE RELATION** WITH COMPUTERS



AI **CAPACITY IS SIMILAR TO PHD**

AI **INTEGRATION REQUIRES EXPERTS**

