



**27<sup>TH</sup> TCI GLOBAL CONFERENCE**  
**THE COLLABORATIVE FUTURE**  
AI & HUMAN PROGRESS THROUGH CLUSTERS  
OCTOBER 8 - 10 CHIHUAHUA MEXICO

# INTERACTIVE SESSION

## CLUSTER POLICY TOOLKIT

SCAN HERE TO ACCESS AND  
DOWNLOAD THE MATERIALS!



**GUILLERMO ACOSTA**

ECONOMY AND PUBLIC MANAGEMENT  
MINISTRY OF CORDOBA, ARGENTINA



**MONIKA ANTONOWICZ**

POLISH AGENCY FOR ENTERPRISE  
DEVELOPMENT



**JOHN HOBBS**

MUNSTER TECHNOLOGICAL  
UNIVERSITY, IRELAND, ACCELERATE  
GDT PROJECT COORDINATOR



**STEPHEN FERTUCK**

GLOBAL INNOVATION CLUSTERS,  
CANADA



**MARC PAPELL**

CLUSTER DEVELOPMENT, COLOMBIA,  
PERU AND ECUADOR



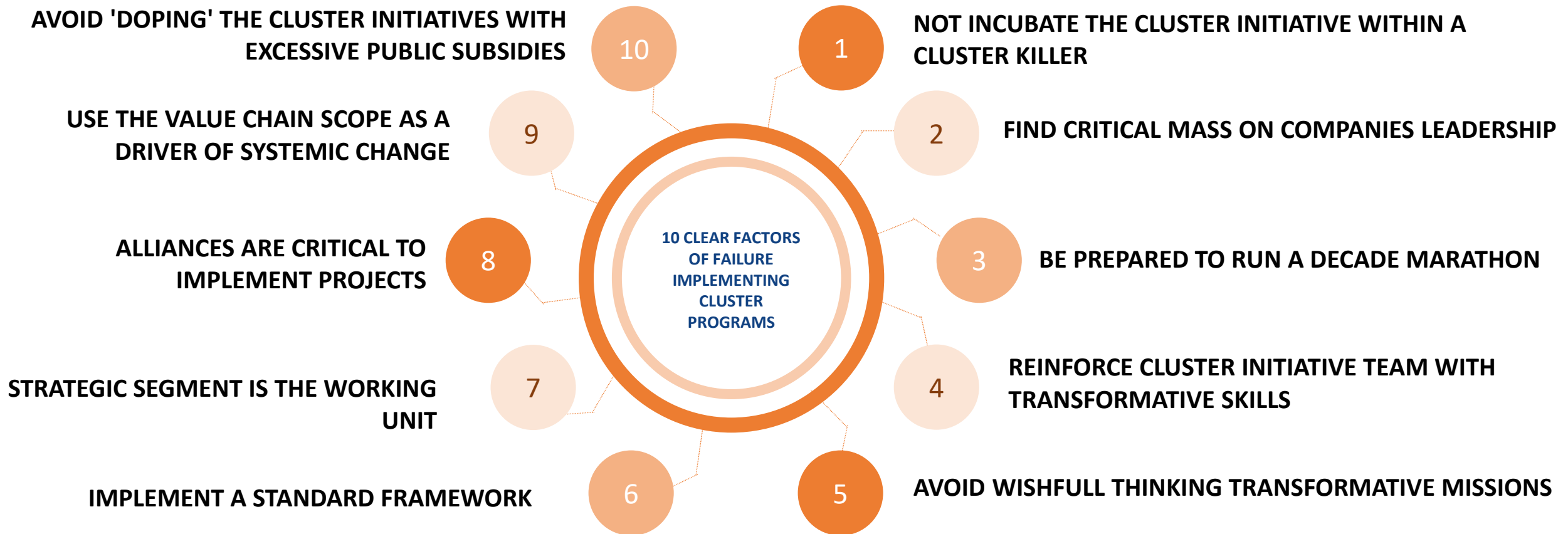
# CLEAR FACTORS OF FAILURE IMPLEMENTING CLUSTER PROGRAMS IN LATIN AMERICA AND THE ROLES IN A COLLABORATIVE MODEL TO FOSTER TRANSFORMATIVE AGENDAS

MARC PAPELL

CEO CLUSTER DEVELOPMENT COLOMBIA

[mpapell@cluster-development.com](mailto:mpapell@cluster-development.com)

**VALUE CHAIN TECHNOLOGY, SOCIAL, DECARBONIZATION AND CIRCULAR TRANSFORMATIONS NEED A SISTEMIC, COLLABORATIVE AND MISSION ORIENTED APROACH (not lineal, not individual)**



**CLUSTER INITIATIVES ARE THE PERFECT FRAMEWORK TO CREATE TRANSFORMATIVE DYNAMICS**

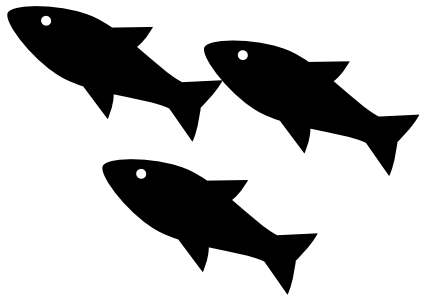
2

# FIND CRITICAL MASS ON COMPANIES LEADERSHIP OR BE A ZOMBI

Private leadership is the main nutrient for a cluster initiative. Develop programs, projects and networking actions to increase the number of companies believers of the transformative agenda

## BELIEVERS AND AMBASSADORS OF THE NEW BUSINESS STRATEGIES

*ROW MATERIAL TO CREATE CLUSTER DYNAMICS (SOUL)*



SALMONS



**Guido Vara**  
Gerente Financiero y administrativo



**Felipe Lerma**  
Gerente General



**John E. Vargas**  
Director de Energía



**Eric Cuenca**  
Gerente general



**Sergio Prada**  
Subdirector Investigación e Innovación



**Miguel A. Ortiz**  
Coordinador de Investigación e Innovación



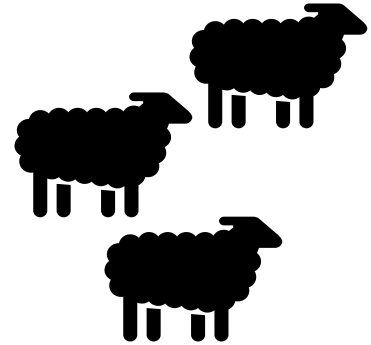
**Felipe Bernal**  
Director Comercial



**Carlos Gómez**  
Gerente General



**Luis F. Tascón**  
Gerente General



BLACK SHEEPS